



Keeping up with the flow with Elyx

Today Elyx is deployed, or is being deployed, at about 30 customer sites. These are mainly local authorities and with public and private sector organizations managing water and sewerage networks. Business applications for water network management have been available in Elyx for some time.

Alongside the continuous improvement of the core Elyx platform, we continue to invest in R&D to bring our other business solutions to Elyx. So for those managing electricity networks, development of the Elyx Elec application was started a few months ago, and the product will shortly be released to succeed STAR Elec, our historical solution. So the ability to manage underground and above ground infrastructure, plan work, manage current and future needs, and the ability see the network in geographic or schematic view will now be available in a modern and integrated technical architecture. You will find more information on Elyx Elec in this newsletter.

For the last three years STAR-APIC has continued to make significant investments to upgrade its products to meet the requirements of our installed base and attract new customers.

Issam TANNOUS
CEO
STAR-APIC Group



STAR-APIC selected by the Urban Community of Lille (Lille Metropole), "Town Planning and Housing" and "Land and Sustainable Development" departments

Following a tender procedure relating to the development of its Geographic Information System, the Urban Community of Lille (LMCU) selected Elyx Office, Elyx Manager and Elyx ETL for the management, processing and production of geographic information within the "Town Planning and Housing" and "Land and Sustainable Development" departments. This choice was made after a competitive tender between different GIS tools available in the market.

The Elyx solution will be used for management, development and/or integration of databases on behalf of the two departments, in the following areas:

- Natural and urban spaces: Local Urban Plan, Risks, planning operations, inventories of rural, urban and landscape heritage, Building Permits...
- Property : Cadastre management, heritage, acquisitions and disposals...
- Housing : Property management, repairs, tenancy...

The Elyx solution simplifies the implementation and use of geographic information in a system adapted to the problems of local authority planning and development by providing tools for integration, production, management and exploitation of geographic data.

This new success confirms the relevance of the Elyx range as a reference tool for GIS jobs in large organizations.

editorial

In this edition...

news 2

Group news
New customers
Projects
Events
Calendar

focus on products 4

Focus on Elyx
STAR-APIC & FME
Datacenters
Map publishing
Mass market solutions

case studies 6

City of Langres
Angers Loire Métropole

Group news

Mercator CPS, a new subsidiary

Mercator, STAR-APIC's cartographic production software, has in its 20 years of existence built an enviable reputation in the international map publishing world. The outstanding quality, productivity and flexibility of this software tool, and the services surrounding it, are praised time and time again by its users, be it long standing or new ones.

To reinforce the name and recognition of Mercator, STAR-APIC has decided to turn the Mercator business unit into a separate subsidiary company, called "Mercator CPS". CPS stands for Cartographic Publishing Solutions, which will continue to be the core activity of the newly formed company.

As an entity completely dedicated to and focussed on cartographic publishing, Mercator CPS will be able to serve the needs of the users in this specific market niche even better than before. Where Mercator started as a pure cartographic prepress software solution, the aim is to encompass and provide solutions for a much wider range of cartographic publishing activities, in accordance with the latest developments in the field.

The Mercator headquarters will remain in Gent (Belgium), from where the worldwide user community will be served with the assistance of a network of local partners, which Mercator CPS is actively developing. As member of the STAR-APIC group, Mercator CPS (and therefore its customers and partners) can further count on the support and expertise in the domain of geospatial solutions offered by the group as a whole.

Contact: paul.dure@mercatorcps.com



Info +

From 3-8 July, Mercator CPS will attend the bi-annual International Cartographic Conference (ICC 2011) in Paris, with a theme of "An Enlightened view on Cartography and GIS". Apart from the conference proper, participants will be able to visit a series of scientific workshops, map exhibitions and, importantly, the professional exhibition. There, organisations involved in geomatics will present the latest developments in software, hardware, database management and map production. ICC is an ideal stage for Mercator CPS to introduce Mercator Suite 7-2, at booth 40. Mercator CPS has also confirmed its presence at Intergeo in Nuremberg from 27 to 29 September 2011.

More information: "Calendar".

New customers

A new project for GRANDLYON (France)

STAR-APIC and SWORD have been selected by the Urban Community of Lyon (also known as Grand Lyon) to redesign its applications dedicated to managing and querying the "Voies et Adresses" (Streets and Addresses) database, called ARIANE. This project has been won in partnership with SWORD who will act as project managers. SWORD are experts in industry-focused process optimisation solutions. Grand Lyon comprises 58 communes, a population of 1.3 million and covers 51,500 hectares and is one of the oldest STAR-APIC customer sites. STAR-APIC software manages all spatial reference data for the Community. In that context, the ARIANE application dedicated to the "Streets and Addresses" database has a strategic and central position within the heart of the Grand Lyon's applications. STAR-APIC and SWORD will be responsible for the redesign of ARIANE using the core Elyx product suite. SWORD will be responsible for the development of Web Services and the coordination of the project which is expected to last for ten months.

STAR-APIC, active at SPW Belgium

STAR-APIC won a tender from the Infraware group of Belgian Walloon Public Service (SPW), who organize, supervise and ensure the operational management of centralized IT infrastructure. The tender is part of a modernization program of Walloon IT and was won in collaboration with NSI, a Belgian partner. STAR-APIC will offer consultancy on tools to host mapping applications.

SUNGARD® France chooses DATACENTER ONE

Availability Services

In order to strengthen its range of datacenter management tools, SunGard Availability Services France has acquired the DATACENTER ONE solution. The acquisition follows a successful POC (Proof of Concept) for the implementation of a solution to optimize the management capability and measure the resilience of datacenters. After the POC was completed in 2010, SunGard was convinced of the benefits of the DATACENTER ONE solution. With DATACENTER ONE, SunGard has an effective tool to manage interventions and test the reliability of any action requested by local clients. It helps them manage in a proactive mode, their hosted solutions and effectively plan and simulate new projects and solutions.

Project



The General Council of Val de Marne has implemented its solution for centralised management and sharing of county geographic data. The Val-de-Marne has 47 communes of 244 km², about 1.3 million inhabitants and 420 km of departmental roads. The implemented solution is based on the Elyx suite which, via Elyx Web, allows access via intranet, to data relevant to various services (land registry, population, roads...). "The new version of Elyx Web and its performance enables easy navigation through the large volume of information generated by an area as wide as that of Val-de-Marne. The level of configuration of the tool will be used to define a variety of thematic environments for services that have expressed an interest in its potential," said Jean-Michel DZIUBICH, Head of CGIS.

Events

Business-focused events in Belgium and France

Late 2010 and early 2011, STAR-APIC teams participated in a number of shows and events aligned with the business-oriented strategy of the company.

Land management was in the spotlight at a seminar on cadastre organized by STAR-APIC Liège on 14 December 2010. The Salon des Mandataires of Marche-en-Famenne, the main meeting place of local authority decision-makers in Belgium, was the first highlight of 2011. Our mapping applications dedicated to the police services were also demonstrated at the INFOPOL show from May 23 to 25 in Kortrijk.

Water and sewerage system management was not forgotten, since STAR-APIC was present at the Carrefour des Gestions Locales de l'Eau 2011, in Rennes, 26 and 27 January. Both were also presented at the Halles Géomatiques, 7 and 8 June in Lyon.

Our datacenter management applications have also been highlighted at trade shows In the Business (March 8-10, Porte de Versailles), and Datacenter Dynamics (June 7, Palais des Congrès de Paris). At these events STAR-APIC demonstrated its DATACENTER ONE solution, which allows customers to locate their assets within a datacenter.

Finally STAR-APIC participated in the 3D Stéréo Média (Liège, December 2010) and Imagina (Monaco, 2011) exhibitions to present the new Elyx 3D solution.

Events



The French Users - Jean-Claude Baccus and Bernard Lechanteur (City of Liège) - Annick Abby and Didier Lemmens (STAR-APIC).

French Users' Club 2010, "un grand cru"

The STAR-APIC French Users' Club took place on 24 and 25 November, in Liège (Belgium). According to Sebastien Barre, President of the Club, "all participants agreed that it was a great success, a grand cru".

It was indeed a very good meeting in every sense: technical content, organization and hospitality. The success of the event also came from the enthusiasm of customers towards Elyx, the new STAR-APIC product range. For two years now, most of the research and development conducted by the STAR-APIC Group has been to ensure the convergence of its products based on the new software suite. In line with its strategic positioning and market expectations; the "Elyx" project was born. Elyx was demonstrated several times,

and was very well received by specialists and mapping professionals. The meeting focussed on detailed technical demonstrations and presentations together with feedback from early adopters of the product range. The enthusiasm and interest of our customers was clearly visible with comments such as "very promising", and "the new software suite is a wonderful evolution". Elyx continues to be developed and we look forward to a bright future.

More information...

info@star-apic.com

Calendar

- **July, 3-8 2011**
25th Cartographic Conference (ICC)
Palais des Congrès, Paris - France
<http://www.icc2011.fr>
- **September, 26-28 2011**
MED-IT
Palais de la Culture, Alger - Algeria
http://www.med-it.com/Alger/index_alger.php
- **September, 27-29 2011**
INTERGEO
Nuremberg – Germany
<http://intergeo.de>
- **November, 3 2011**
STAR-APIC UK 20th Anniversary Event
London - United Kingdom
<http://www.star-apic.com>
- **November, 10 & 17 2011**
GeoDATA 2011
Edinburgh & Belfast – United Kingdom
<http://www.geoinformationgroup.co.uk>
- **Autumn 2011**
French Users's Club
More information about this event will be soon sent to users.

20 years of STAR-APIC in UK

2011 sees the 20th anniversary of STAR-APIC in UK.

Eurecart, as we were first known as, was set up in 1991 with offices at Langford in Essex and a prototype installation of APIC 2.3 at Essex and Suffolk Water. This was shortly followed by a larger system at North-East Water. Both these organisations are now part of Northumbrian Water who remain a major customer. Eventually Eurecart became a direct subsidiary of APIC SA in France and we changed our name accordingly. We also moved to our current offices in Bishop's Stortford, to be

close to London Stansted Airport.

In addition to Utility expertise we have worked with Police forces, supplying GIS integrated into Command and Control systems in conjunction with Siemens Plessey, and more recently Government departments. The Coal Authority became a customer in 1996 and over recent years we have provided systems to organisations dealing with agricultural subsidy payments in Northern Ireland, Wales and Scotland.

When Mercator became part of the STAR-APIC group we took over responsibility for managing the many prestigious Mercator accounts in UK and Ireland including the Royal Air Force, the Automobile Association, Ordnance Survey

Ireland, Philip's and the Highways Agency.

In addition to supplying our standard software products, we have developed some UK specific applications such as APIC-Shift and APIC for Mastermap which have been marketed successfully to Local and Central Government and Utility companies. We are also the acknowledged group experts in FME.

The GIS industry has changed dramatically in the last 20 years but STAR-APIC continues to be a notable player in the UK market.

More information...

info@star-apic.co.uk

London Mapping Festival

STAR-APIC are pleased to be participating in the London Mapping Festival which was launched earlier this month in Central London and will run until the end of 2012. With the Olympics coming to London in 2012 the festival is organised to showcase the whole range of mapping activities taking place in London, from public geo-caching to professional geospatial and GIS events. The culmination of the festival will be a gala charity ball in aid of the Festival Charity Map Action who deliver mapping assistance to humanitarian crises worldwide.

More information: www.mapaction.org
www.londonmappingfestival.org

STAR-APIC is committed to positive social action

Being aware of social and humanitarian concerns, the STAR-APIC Group has decided to engage in a programme of positive action. The Group supported the "race against disease" in aid of the ELA association, which organised a 6km run on June 10 in Liège. ELA fights against leukodystrophies, a rare genetic disease that affects the central nervous system and gradually destroys all vital functions. Many employees from STAR-APIC's Liège office participated in this project of hope. This is the second consecutive year that the group has supported this cause.

STAR-APIC is also committed to the humanitarian organization "Un enfant par la main," an international solidarity organisation that supports children and the poorest families through child sponsorship and the implementation of micro-development projects. STAR-APIC was involved in an advertising promotion aimed at increasing the visibility of the association.

More information: www.ela.be
www.unenfantparlamain.org



The STAR-APIC team - ELA race

Focus on Elyx

ELYX Elec, new business application



With its industry expertise acquired from working with electric utilities for almost 20 years, STAR-APIC is developing Elyx Elec, the mapping product for management of power systems that will replace our current STAR Elec product.

Elyx Elec is based on a topological, configurable and expandable data model suitable for all electrical networks. The software is based on Oracle Spatial, the industry standard for storage and management of spatial data

Elyx Elec is designed for operators of power grids who are responsible for the management and maintenance of existing networks. It allows the capture and update of electricity network data according to connection rules and parameters, and the management of base mapping.

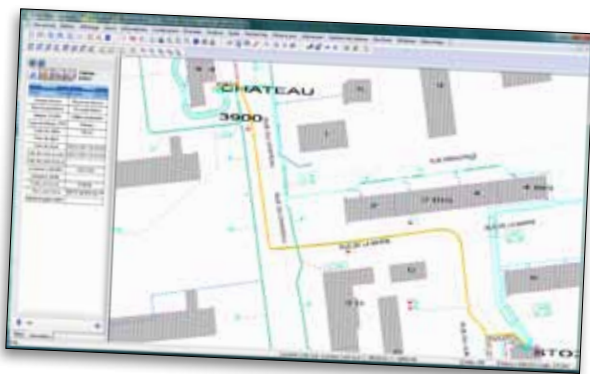
It supports the management of underground infrastructure with recording of cabling and ducts including abandoned plant. In addition network connectivity is maintained

so the path from one device to its power source, or network supplied from a location can be displayed.

The software maintains the internal connectivity of posts and cabinets, and the electrical states of open and closed nodes.

Elyx Elec also integrates geo-schematic management of the network in which objects share the characteristics of objects in the geographic network, although they are represented differently. Elyx Elec supports queries, and spatial and thematic analysis, and the management of the documentation attached to managed objects.

Elyx Elec comprises Elyx Office, Elyx Web and will soon be supported on Elyx Mobile. Application administration is undertaken through Elyx Manager which allows data model configuration, and management of data access rights, and user profiles.



More information...

elyxelec@star-apic.com

The first commercial version of Elyx 3D available in June 2011

Elyx 3D, a real 3D Geographic Information System, supports the centralization and sharing of data both 2D and 3D data in a single data warehouse.

Unlike existing 3D visualization software that requires preparation of 3D scenes well before their display, Elyx 3D directly accesses the 2D/3D database and dynamically displays the contents on the screen. This "real time" operation mode is ideally suited to handle situations where there are frequent changes to data and the result needs to be seen instantly.

Moreover, while competitive products lose track of 3D objects when 3D scenes are generated, Elyx 3D maintains persistence of GIS data that can be manipulated individually, allowing a very precise work at the GIS object level.

Elyx 3D is not restricted to the relatively small, but growing, number of 3D data owners. 2D/2,5D data owners can now

enhance their data and generate 3D data by projection onto a DTM, extrusion and application of generic textures. To the extent that Elyx 3D can handle 2D/2,5D and 3D data simultaneously and manage different levels of detail (LOD: the OGC CityGML standard), a user can have a mix of 2D/2,5D and 3D data, and view geographic areas with an appropriate level of detail. By developing the data model an organisation can gradually expand its use of 3D data, to meet specific requirements.

In addition to visualization, navigation and search capabilities traditionally found in the 3D viewer market, Elyx 3D offers advanced services for editing 3D GIS objects, and spatial analysis that make it a true 3D data manager. Elyx 3D is indispensable partner

Water & sewerage networks: new publication

STAR-APIC, the leading developer of water and sanitation network management applications, strives to provide infrastructure managers powerful tools that meet their specific requirements to deliver quality while complying with local regulations.

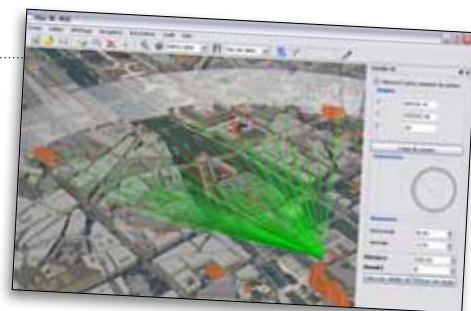
With its expertise, STAR-APIC has decided to conduct a series of reflections on the most recurrent issues encountered by such managers. The idea is to give voice to industry experts able to offer best practice, and provide relevant views on the water and sanitation sector.

The first part of this work led to the publication of the White Paper "Leakage and performance monitoring using network management tools": written by Roland Mousset, who is responsible for the STAR-APIC Water and Sewerage Networks Business Unit.

Check out this white paper at www.star-apic.com.

More information...

elyxaqua@star-apic.com



managers

of land and infrastructure who need to control, develop and refine their work and improve decision making by making use of 3D data.

Through the systematic use of standard formats (CityGML, Collada, 3DS), Elyx 3D is an open product that allows data exchange with other systems that meet these standards. The centralization and sharing capabilities allow Elyx 3D to share the same 3D data source with business applications for simulation and development.

More information...

elyx3d@star-apic.com



STAR-APIC & FME

STAR-APIC are longstanding resellers of FME® and have developed a close working relationship with SAFE, the developers of FME, over more than 10 years.

FME is the market leading software that makes it easy for GIS professionals and organisations to use and share mapping and geospatial data efficiently and effectively. It is an ideal compliment to STAR-APIC products and indeed is integrated within many of our solutions.

FME can help improve efficiency, reduce costs and lower risk. FME solves more spatial data transformation challenges across more formats than any other solution, making it easier to solve data interoperability headaches and meet required standards.

STAR-APIC are authorised resellers of FME and we support FME events in UK and worldwide. Two STAR-APIC UK staff are FME Certified Professionals and we are working to FME Certified Trainer accreditation.

Please contact us if you would like more information about FME or FME training.

Contact: info@star-apic.com.

Datacenters

New releases: **DATACENTER** One

DATACENTER ONE v 3.5

The 3.5 release of DATACENTER ONE has been available to customers and prospects for demonstration and evaluation projects in pre-sales since early April 2011.

This new version brings several new significant enhancements:

- extended modeling of electrical wiring, including three-phase;
- a model with three levels of nesting of modular equipment;
- an improved and extended report generator;
- the optional Project One module to plan deployment projects;
- the Workorder One optional module to manage the work orders.

DATACENTER ONE v4.0

Scheduled for late June 2011, this major release brings a new Web service based architecture developed on the Microsoft DOT.NET framework. It will simplify scalability, offer better resilience and support deployment on architectures based on virtual machines. This new version brings several new features for advanced users and managers of datacenters, the most significant being:

- a better and more ergonomic module for bulk data loading;
- a web portal for managing reporting, print-on-demand and scheduling.

More information...

datacenter@star-apic.com

Map publishing

Mercator Suite 7-2

Mercator CPS has just released Mercator Suite7-2. The main objective of this version is to make the Mercator functionality even more accessible, especially for users who need the professional power of our cartographic tools only occasionally. Suite 7-2 has also a new capability to integrate 3rd party tools, such as FME (www.safe.com) and Label-EZ (www.maptext.com), into automated production workflows based on MercatorServer.

Contact: info@mercatorcps.com

Mass market solutions

Feel like a ride in the Netherlands?

Did you know that STAR-APIC is the co-editor, with the ANWB, of the mass market DVD "ANWB Fietplanner Nederland"?

This application allows you to plan cycling trips through the network of trails and "node points" maintained by ANWB.

These cover the entire Netherlands, so more than 6000 node points to which can be added a number of long-distance route.

The DVD also contains a package of 75 one-day itineraries prepared in advance and documented.

Best of all, this DVD contains the complete mapping of the country at a scale of 1: 50 000, ready to be printed.

The application works in French, Dutch or English. Almost all you have to do is ride!

The DVD is priced at € 49.95 in all ANWB stores throughout the country, or on the ANWB website: <http://www.anwb.nl>.



New web site, new applications

The Geolives website has a new layout and offers new applications.

<http://guides.geolives.com>

Free application to search for walking routes

Find 2D and 3D walks you saved and published with your Smartphone: points of interest with photos, longitudinal profile, altitudes... but also those of our partners as TraceGPS, O2bikers and several tour operators.

<http://editor.geolives.com>

Fee application to edit your routes

Edit your routes online using Google or IGN maps. Create real media guides showing points of interest with pictures and text. Publish your guides to Geolives applications for Smartphones and the website is free to search.

A new "Gold Editor" application with additional features is offered specifically for tour operators to promote their area.

Geolives offers, for this summer, a new application "Geolives France" for iPhone, Android Phone and soon Windows 7, giving access to all IGN France maps for 4.99€ for one month or 14€ for a whole year. The IGN maps are also usable, during the time of subscription, in the new web applications described above. The same concept will soon be offered in Belgium with the IGN Belgium maps to 10,000 scale.



More information: contact@geolives.com

The anti-social behaviour observatory



For two years, the GIS department of the City of Langres has collected, organized, mapped and analyzed anti-social behaviour identified in the city. The aim of the observatory is to understand the precise locations and types of problems in order to deploy solutions, to minimise impact on citizens.

The observatory has developed from a partnership between the City and the police department of Langres. It allows the geographical location of various incidents to be mapped from information supplied by the police. The fight against antisocial behaviour of any kind, involves understanding as much about the location and timing of incidents throughout Langres.

The first stage of the process was to divide the city into sectors. Four areas have been identified: the "historic central area", the "CUCS zone", the "suburbs", and the "other areas". Incidents were then analyzed from third quarter 2008 to second quarter 2010. The different types of incidents were finally grouped into

five categories to simplify analysis and display: assaults, vandalism, theft, fires and burglaries. The analysis of all these data concluded that anti-social behaviour in Langres was not particularly linked to area. The city as a whole is subject to varying degrees of incident. A relationship between the type of antisocial behaviour and the geographic areas could nevertheless be found: a neighbourhood is more frequently linked to a kind of nuisance. The historic district and the CUCS area suffered more damage, while fires are most common in the suburbs.



More information...

jean.daniel.bonhomme@langres.fr

Contact:

Jean-Daniel Bonhomme
Citizens Services Department



An underground network managed by Elyx Aqua

Angers Loire Métropole is an urban community of 31 French municipalities and 280,000 inhabitants. This is one of the oldest water supply and sanitation companies in France. Here we interview Vincent Pronnier, GIS technician responsible for network maintenance in the GIS. Focus on his work.

Why did you choose the STAR-APIC Elyx Aqua solution to manage your water network? What requirements were met by this solution?

This solution had to meet several management goals and bring greater efficiency to managing our network. Including:

- simplify the work of preparing our renewal program (AEP and EU networks),
- develop management tools to measure the response of the networks (ITV, leaks, complaints, ...),
- facilitate the updating of data whether in the office or in the field with a mobile (GIS),
- facilitate emergency responses in the field,
- interact with other databases (Customer E-GEE),
- allow fast data exchange with external partners.

The Elyx Aqua solution was selected because we were already users of STAR-APIC solutions. This new application will enable us to develop our GIS to meet the needs I have described.

What benefits do you get from using Elyx Aqua?

Elyx Aqua allows easier and better controlled updates. Research and analysis are intuitive and easy to handle. The different network search capabilities are an essential tool for understanding our network. Other business features are under development or integration such as data dissemination via the web and some sewerage applications.

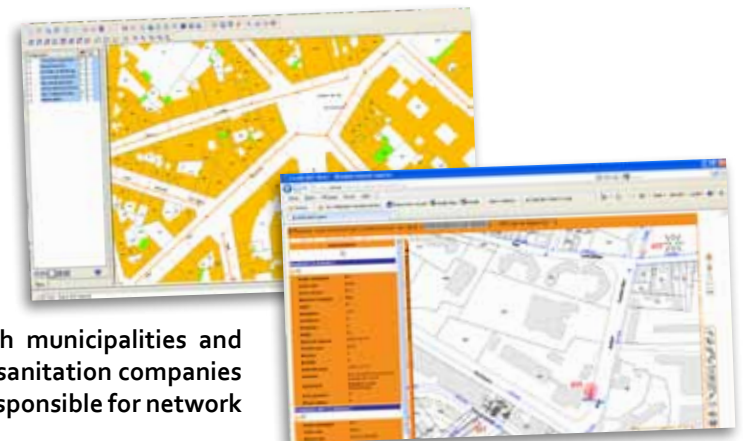
Could you describe one or two features that have become essential?

Now, updating the network is easy. For instance, I have the ability to make use of as built drawings (DXF or DWG) as constructions and only have to validate the information for it be integrated into the database. I also like the import / export to Excel, which allows me to perform mass attribute updates.

Check out the whole interview on the STAR-APIC website.

Contact:

Vincent Pronnier
vincent.pronnier@angersloiremetropole.fr



bco

is a publication of the STAR-APIC Group, leading European geospatial software technology company providing a range of products for managing land, property and infrastructure.

Belgium : Liège Science Park - Avenue du Pré Aily, 24 - 4031 Angleur (Liège)
France : 191, avenue Aristide Briand, 94230 Cachan
United Kingdom : The Stables, Cannons Mill Lane, Bishop's Stortford, Hertfordshire CM23 2BN

Publisher: Issam Tannous.

Editorial board: Aurélie Milis, Carole Thomas.

Contributed to this issue : Benoît Abrassart, Philippe Berle, Bruno Brottier, Thierry de Tombeur, Paul Duré, Pierre-Jean Lautier, Patrice Lejeune, Hubert Lorang, Roland Mousset, Yves Peeters, Anne-Lise Poplasvky, Tom Timms.

Acknowledgment to Sébastien Barre (Communauté d'Agglomération de la Rochelle), Jean-Daniel Bonhomme (Ville de Langres), Jean-Michel Dziubich (Conseil Général du Val-de-Marne), Vincent Pronnier (Communauté d'Agglomération d'Angers Loire Métropole).

